

## Creative curriculum Planning

“I like to move it, move it!”

Year 2

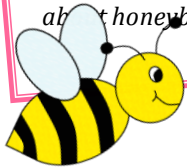
Summer 1

**Year 2 Copthorne Curriculum Theme (Summer Term)**



**Areas of Learning: "I like to move it, move it!"**

*As scientists we will be looking at animals including the migration of some animals from one place to another. We will visit the Bradford Aviary to learn about honeybees, their habitat and how they communicate.*



*As writers, we will write adverts for a holiday in a non-European country and will research and write about the different modes of transport that could take us there.*

*In geography, we will find out about how and why transport is different in various countries across the world.*

*As good citizens, we will create tally charts reflecting the transportation methods used in Bradford. We will also consider the environmental implications of different modes of transport.*



*In PE we will improve our fitness using traditional modes of travel such as walking and running.*



Independent Learning	Possibilities	Fresh Experiences
We will have the chance to choose vehicles that interest us to research further. We will independently use ICT and text books to find out the history of transport.	When we are considering the methods of transportation used in Bradford, we will reflect on possible ways be more environmentally friendly when travelling to and from school.	We will travel to the Bradford Aviary and learn about how honeybees have a positive impact on the environment.
Social, emotional, moral, spiritual and cultural development (SEMSC)		
We will discuss how different types of transport impact on the environment and the effect of transport on global warming. In PSHE, we will discuss discrimination on public transport during Apartheid (Rosa Parks) and talk about fairness and equality.		

## Copthorne Primary School Creative Curriculum

### Medium Term Planning Overview

Theme: I like to move it, move it! (Transport)

Timescale: Summer (5 weeks)

Week	Activity
1 (Joint)	Environment week activities:  Visit to Bradford Aviary Farm and non-chronological report on honeybees as follow up.
2 (Joint)	Brief input on types of transportation.  Walk to park: create tally chart for the different types of transport seen during the walk. (Risk assessment.)
3 (Jamie)	Interpret results and create graph based on tally chart from previous week. Make links to environmental impact of different modes of transportation.
4 (Irem)	Name and describe different modes of transport- via ocean, sky, land- include examples from different places around the world.
5 (Joint)	Write adverts for a holiday to a non-European country (Geography/English) "Come fly to Canada, when you are there you can travel by boat"